



# PASADENA POLICE DEPARTMENT

## PRELIMINARY - Monthly Statistical Report

December 2014

This Preliminary Monthly Statistical Report is based on Call for Service (CFS) data and is not Uniform Crime Report (UCR) compliant. Select call types are included for incidents closed with a report disposition. Using preliminary information allows for timely information to make immediate deployment decisions.

Offense	Service Areas					
	1	2	3	4	5	
Homicide						0
Rape		2			1	3
Robbery		8	5	1		14
ADW	1	7	4		2	14
Assault	1	15	2	3	10	31
Assault DV	1	6	3	1	2	13
Burglary Commercial	1	3	2	13	5	24
Burglary Other	2		1		3	6
Burglary Residential	17	18	9	3	9	56
Burglary Vehicle	12	9	7	9	17	54
Theft	32	21	35	25	37	150
<i>Recovered Vehicle</i>	2	2	2	2	1	9
Stolen Vehicle	5	3	5	4	1	18
	<b>72</b>	<b>92</b>	<b>73</b>	<b>59</b>	<b>87</b>	<b>383</b>

Offense	Council Districts							
	1	2	3	4	5	6	7	
Homicide								0
Rape			2		1			3
Robbery	4	5		1	4			14
ADW	3	2	4		2	3		14
Assault	7	2	6	3	7	5	1	31
Assault DV	1	2	4	1	3	1	1	13
Burglary Commercial	1	1	2	13	2	2	3	24
Burglary Other		1				3	2	6
Burglary Residential	9	5	7	4	6	19	6	56
Burglary Vehicle	4	4	11	10	6	15	4	54
Theft	9	11	30	25	21	29	25	150
<i>Recovered Vehicle</i>	1	1	1	2	1	3		9
Stolen Vehicle	2	1	1	4	2	5	3	18
	<b>40</b>	<b>34</b>	<b>67</b>	<b>61</b>	<b>54</b>	<b>82</b>	<b>45</b>	<b>383</b>

\*\*Totals do not include recovered vehicles

**INFORMATION IS TIME SENSITIVE AND SUBJECT TO CHANGE UPON FURTHER ANALYSIS**

**FOR PUBLIC DISTRIBUTION**

# PASADENA POLICE DEPARTMENT

Combined Service Areas and Council Districts - December 2014																			
Council District	West			Northwest				Central				East		Midtown					
	1	6	7	1	3	5	2	4	5	7	4	1	3	5	6	7			
Homicide																			0
Rape					1	1	2								1				3
Robbery				4		4	8	5				5	1	1					14
ADW		1		1	3	4		7	2		2		4				2		14
Assault		1		1	7	3	5	15	2			2	3	3		3	2	4	31
Assault DV		1		1	1	3	2	6	2			1	3	1	1		1		13
Burglary Commercial		1		1	1		2	3	1			1	2	13	13		2	1	24
Burglary Other		1	1	2					1				1				2	1	6
Burglary Residential		13	4	17	9	6	3	18	5	1	2	1	9	3	3		1	1	56
Burglary Vehicle	2	10		12	2	3	4	9	4	1	1	1	7	9	9		8	1	54
Theft	3	22	7	32	6	8	7	21	11		12	12	35	25	25		22	2	150
Recovered Vehicle		2		2	1	1		2	1		1		2	2	2			1	9
Stolen Vehicle		4	1	5	2	1		3	1		2	2	5	4	4			1	18
<b>TOTALS</b>	<b>5</b>	<b>54</b>	<b>13</b>	<b>72</b>	<b>35</b>	<b>29</b>	<b>28</b>	<b>92</b>	<b>34</b>	<b>2</b>	<b>19</b>	<b>18</b>	<b>73</b>	<b>59</b>	<b>59</b>	<b>0</b>	<b>38</b>	<b>7</b>	<b>383</b>

Combined Service Areas and Council Districts - 2014 Year to Date December																			
Offense	West			Northwest				Central				East		Midtown					
	1	6	7	1	3	5	2	4	5	7	4	1	3	5	6	7			
Homicide		1		1	5			5								2		1	9
Rape	2	5		7	3	2	4	9	5			1	6	1	1		4	1	28
Robbery	3	10	2	15	9	16	26	51	13		4	2	19	17	17		11	2	126
ADW	3	10	1	14	38	24	20	82	6		4	1	11	12	12		14		150
Assault	19	26	5	50	39	24	35	98	19		9	8	36	25	25		32	10	293
Assault DV		8	6	14	35	33	30	98	22		14	3	39	13	13		2	9	188
Burglary Commercial	2	55	13	70	12	17	17	46	39	3	9	6	57	100	100		1	68	393
Burglary Other	1	11	10	22	10	1	1	12	10	1	3	5	19	17	17		1	7	106
Burglary Residential	1	81	25	107	75	52	40	167	74	21	18	27	140	79	79		3	4	518
Burglary Vehicle	34	62	28	124	34	38	23	95	42	5	11	25	83	71	71		58	5	504
Theft	33	239	78	350	73	90	87	250	142	25	59	75	301	270	270		2	219	1625
Recovered Vehicle		16	2	18	19	10	6	35	5	3	5	5	18	15	15		3		92
Stolen Vehicle	6	36	6	48	19	23	19	61	19		19	18	56	19	19		2	12	224
<b>TOTALS</b>	<b>104</b>	<b>544</b>	<b>174</b>	<b>822</b>	<b>352</b>	<b>320</b>	<b>302</b>	<b>974</b>	<b>391</b>	<b>55</b>	<b>150</b>	<b>171</b>	<b>767</b>	<b>624</b>	<b>624</b>	<b>8</b>	<b>439</b>	<b>72</b>	<b>4164</b>

\*\* Totals do not include Recovered Vehicles

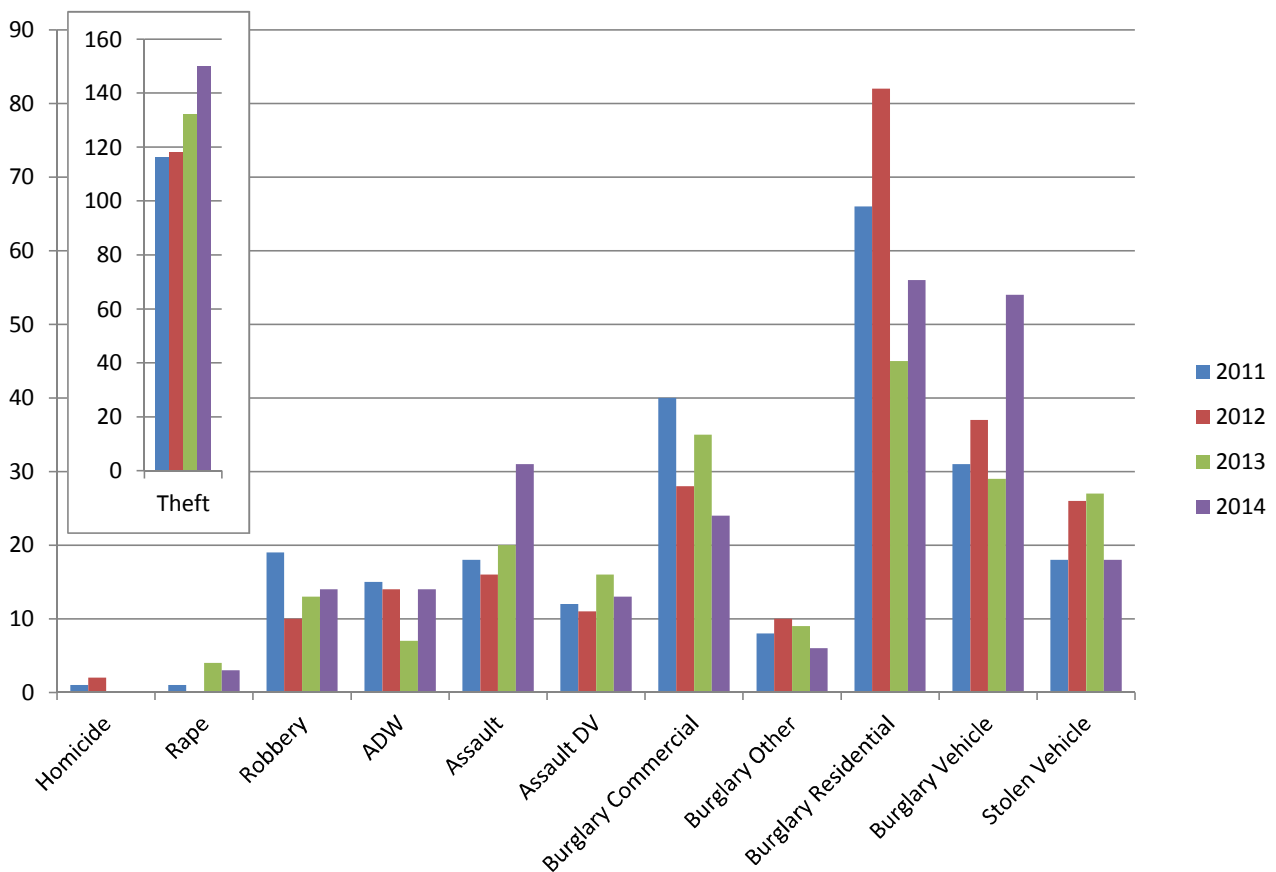
**INFORMATION IS TIME SENSITIVE AND SUBJECT TO CHANGE UPON FURTHER ANALYSIS**

**FOR PUBLIC DISTRIBUTION**

# PASADENA POLICE DEPARTMENT

## Dec 2011 - Dec 2014

	2011	2012	2013	2014	Change from 2013
Homicide	1	2			N/C
Rape	1		4	3	-25%
Robbery	19	10	13	14	8%
ADW	15	14	7	14	100%
Assault	18	16	20	31	55%
Assault DV	12	11	16	13	-19%
Burglary Commercial	40	28	35	24	-31%
Burglary Other	8	10	9	6	-33%
Burglary Residential	66	82	45	56	24%
Burglary Vehicle	31	37	29	54	86%
Theft	116	118	132	150	14%
<i>Recovered Vehicle</i>	<i>10</i>	<i>9</i>	<i>11</i>	<i>9</i>	<i>-18%</i>
Stolen Vehicle	18	26	27	18	-33%
	<b>345</b>	<b>354</b>	<b>337</b>	<b>383</b>	<b>14%</b>

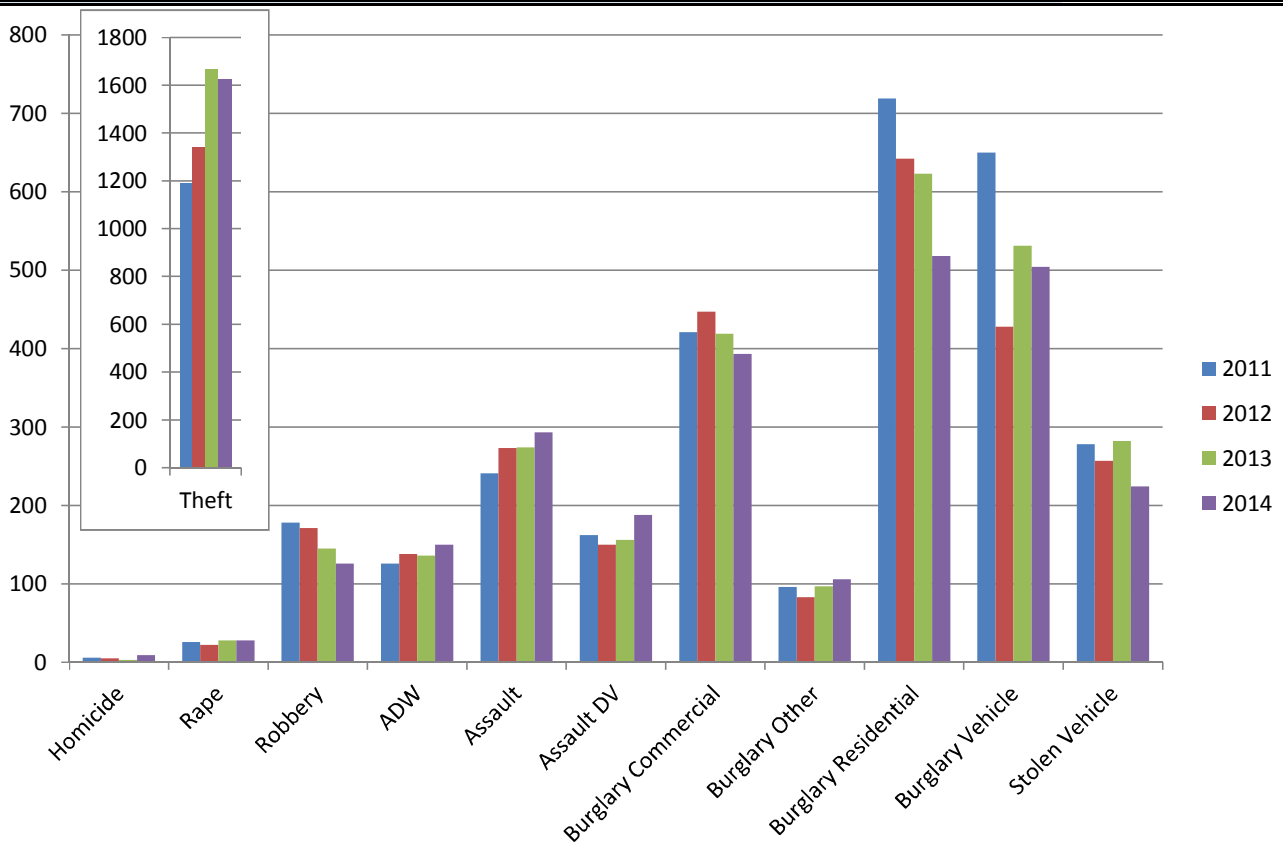


**INFORMATION IS TIME SENSITIVE AND SUBJECT TO CHANGE UPON FURTHER ANALYSIS  
FOR PUBLIC DISTRIBUTION**

# PASADENA POLICE DEPARTMENT

## Year to Date through December

	2011	2012	2013	2014	Change from 2013
Homicide	6	5	3	9	200%
Rape	26	22	28	28	0%
Robbery	178	171	145	126	-13%
ADW	126	138	136	150	10%
Assault	241	273	274	293	7%
Assault DV	162	150	156	188	21%
Burglary Commercial	421	447	419	393	-6%
Burglary Other	96	83	97	106	9%
Burglary Residential	719	642	623	518	-17%
Burglary Vehicle	650	428	531	504	-5%
Theft	1189	1342	1668	1625	-3%
<i>Recovered Vehicles</i>	<i>89</i>	<i>95</i>	<i>113</i>	<i>92</i>	<i>-19%</i>
Stolen Vehicle	278	257	282	224	-21%
<b>Total</b>	<b>4092</b>	<b>3958</b>	<b>4362</b>	<b>4164</b>	<b>-5%</b>



**INFORMATION IS TIME SENSITIVE AND SUBJECT TO CHANGE UPON FURTHER ANALYSIS  
FOR PUBLIC DISTRIBUTION**